



POSITIVE RELATIONSHIPS

AT LOW PORT PRIMARY

At Low Port, we believe strong, caring relationships help everyone feel safe, happy, and ready to learn.



Our Vision is to ensure every child feels safe, valued, and ready to

Our Values

Our values are like superpowers! They help us be kind, fair, and respectful every day. When we use them, our school becomes a happy, safe place where everyone can learn and play together. Our values make us strong as a team because when we care for each other, everyone shines!



Integrity

We care for each other and do the right thing even when no one is watching



Resilience

We keep trying and learn from challenges



Inclusion

Everyone belongs and every voice matters



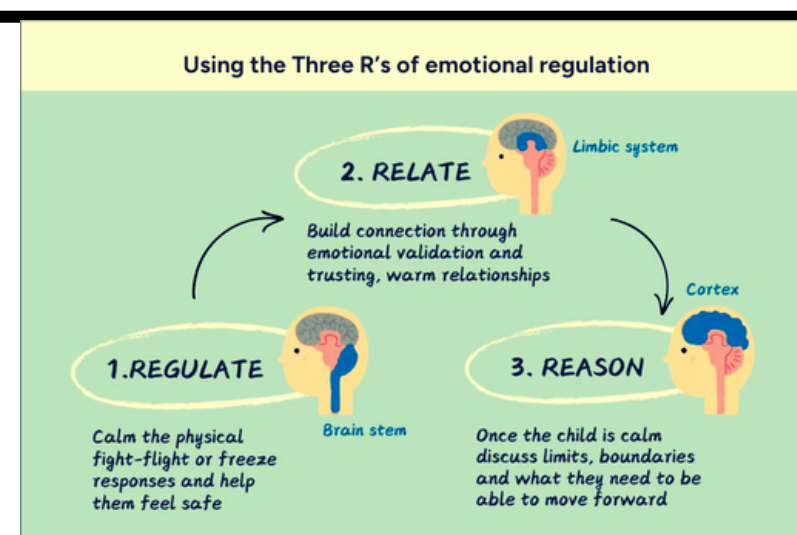
Respect

We treat everyone the way we want to be treated

Our Approach to Positive Relationships

Our approach is based on:

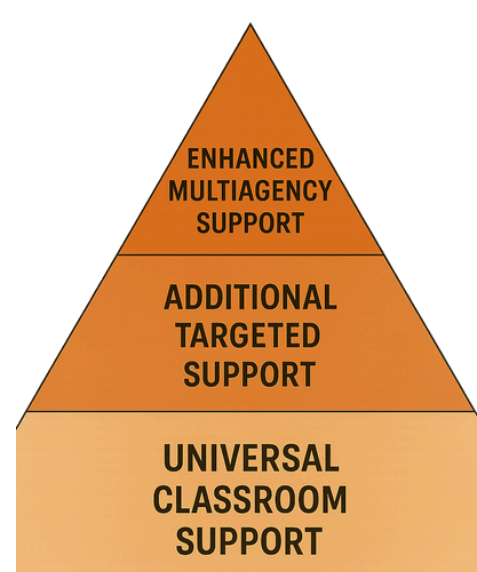
- Children's Rights (UNCRC)
- Wellbeing (SHANARRI)
- Trauma-Informed Practice



How We Support Positive Relationships

Support for Everyone

Help and learning is tailored to each child's needs.

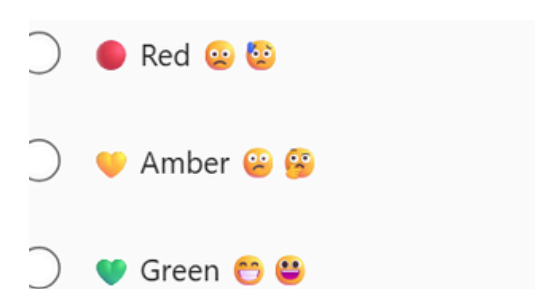


Wellbeing Check-Ins

Time to share feelings and get help if needed

SAFE

I know how to keep myself safe.
I have adults I trust to help me feel safe at school, home and in the community.
I know how to keep myself safe online. *



Trusted Adults

Someone every child can talk to.

every child deserves a CHAMPION, a trusted adult who will never give up on them, who understands the power of connection and insists that they become the best they can possibly be...

Nurture approaches

We have safe spaces, caring routines, and understanding behaviour.



POSITIVE BEHAVIOUR

AT LOW PORT PRIMARY

High Expectations

At Low Port, we have high expectations for all. We all work together to keep our school safe, happy, and respectful.

Our expectations are based on our values, wellbeing indicators, and children's rights. If someone needs extra help, we support them with care.



Our Approach to Positive Behaviour

Celebrating Success

We believe in noticing and celebrating positive behaviour first. When we show our values we make sure everyone feels proud and valued. Our goal is simple: everyone feels seen, appreciated, and motivated to keep making positive choices. **Positive Praise** ensures everyone feels valued, confident and motivated. It teaches everyone what's expected and builds positive relationships.

Low Port Primary

At LPPS we demonstrate...

V		Integrity
A		Respect
L		Resilience
U		Inclusion
E		
S		

UNCRC

We create charters with agreements created based on UNCRC rights, showing how everyone will respect each other's rights.

Jar of Stars

Classes work together to fill buckets with stars for showing our values. The class with the most stars each week gets an extra break time!

House Points

House points are awarded to celebrate positive choices and team work. Every point shows an individual showing our values. This helps children feel proud of their contribution and encourage a sense of belonging.

Awards

End of Year Awards Ceremony - a variety of awards for children who have gone over and above in different areas.

Repair and Restore

When something goes wrong, we focus on repairing relationships, not punishment.

To do this we:

- Use restorative conversations to help everyone feel heard and understood.
- Talk about what happened and how it affected others.
- Share feelings in a safe space.
- Work together to make things right and prevent it happening again.



Our goal is to help everyone learn from mistakes and move forward positively.

Logical & Natural Consequences

Instead of punishment, we help everyone understand the impact of our choices:

- **Natural Consequences** happen on their own:
 - Skip lunch → feel hungry later
 - Arrive late → miss instructions
 - Be unkind → friends may not want to play
- **Logical Consequences** are planned and linked to the behaviour:
 - Break a toy → help fix it
 - Make a mess → help clean up
 - Hurt someone → check they're okay and make amends

Consequences are always:

- **Related to the behaviour**
- **Respectful (no blame or shame)**
- **Reasonable and fair**

This way, we learn responsibility while feeling supported and valued.

SUPPORTING SELF-REGULATION

AT LOW PORT PRIMARY

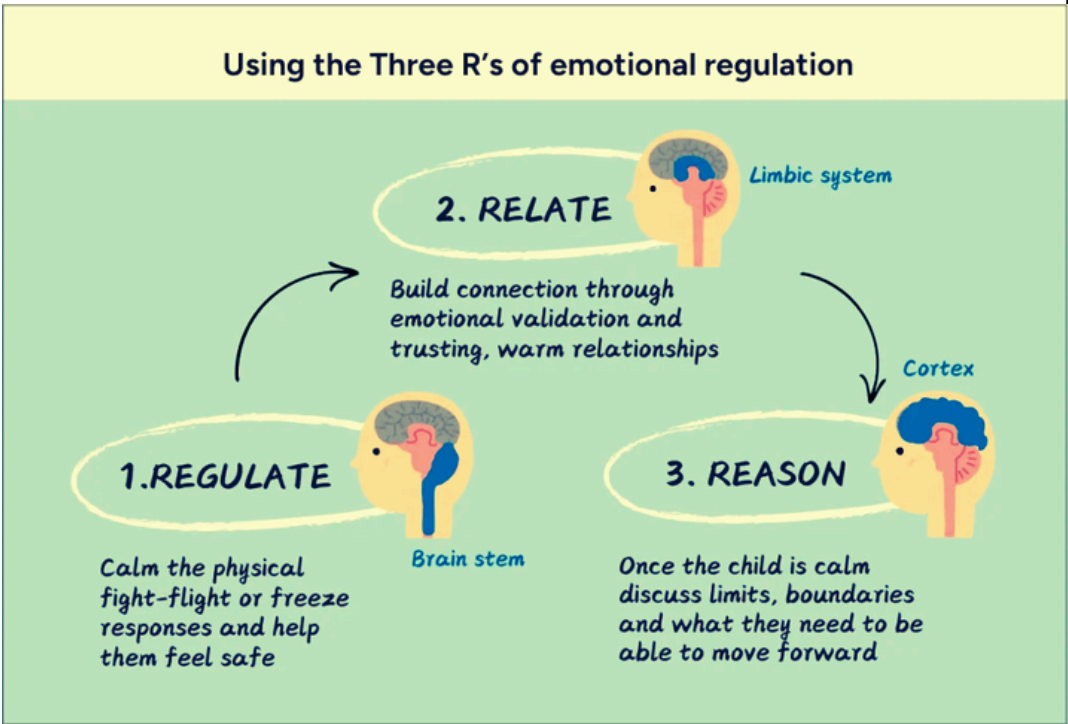
Our Trauma Informed Approach to Support Dysregulated Behaviour

We recognise sometimes we find things challenging which may effect how we behave. We support children to regulate their emotions, understand expectations, boundaries and learn to repair relationships. Every child has the right to feel safe, respected, and included (UNCRC). Our approach is trauma-informed, grounded in understanding that all behaviour is communication.

Our Core Steps:

Relate → Regulate → Reason → Repair

Our core approach is trauma-informed because it prioritises connection and emotional safety before correction. It avoids punitive responses and focuses on teaching regulation and resilience. We keep everyone safe first. We write down what happened so we can learn and make things better. We talk to families so they know what happened and how we supported.



Relate

We connect first. We show care and help everyone feel safe.

I'm here.
You're safe.



Regulate

We help everyone calm their body and mind before we talk.

Let's go to the calm corner and take some deep breaths.



Reason

After we feel calm, we talk about what happened and what can help next time. This is also when we remind of our expectations and boundaries so everyone feels safe.

You were upset when the game changed. Next time, we can use the calm corner instead of shouting. Our rule is kind words only.



Restore & Repair

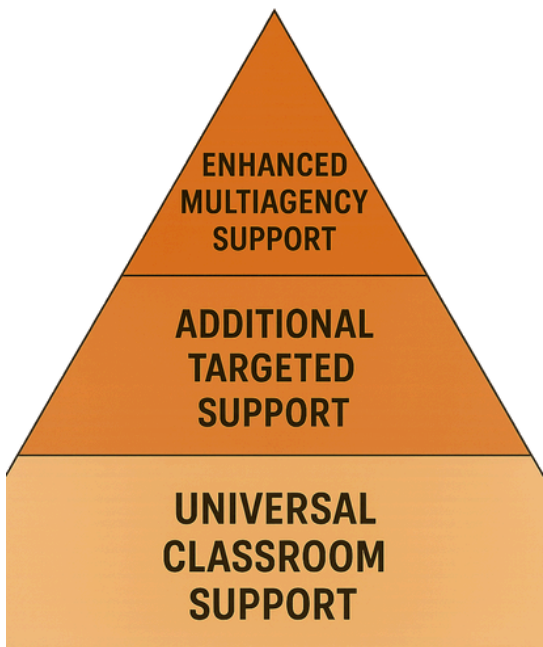
Finally, we work together to make things right we might use a Fix-It Folder or do a helpful job to show we care. If something was broken or hurt, we help fix it (using logical/natural consequences) because putting things right is part of learning.

You knocked over the blocks when you were upset. Let's rebuild them together so everyone can play.



Tiered Support – Tailored to Need

Everyone gets help to feel calm and ready to learn. We give support in different ways to support regulation and behaviour because everyone needs different things. Everyone deserves care, consistency, and a plan that helps them succeed.



Universal: For Everyone

- Calm boxes with sensory tools
- Calm corners or quiet spaces in every classroom
- Predictable routines and visual timetables
- Positive language and kind words
- Whole-class calming activities (breathing, mindfulness)
- Wellbeing check ins
- Trusted Adult Conversations



Targeted: For Some

- Positive Response Plans
- Extra check-ins with a trusted adult
- Visual supports for transitions
- Break cards or movement breaks
- Small group regulation, social skills or nurture groups



Enhanced: For a Few

- Personalised safe spaces designed with child
- We work with multi-agency planning with partners (e.g., Educational Psychologist, OT)
- Specialist sensory tools or equipment
- Individualised risk assessments
- Positive response plans



ANTI-BULLYING, EQUALITY & DIVERSITY

AT LOW PORT PRIMARY

We want our school to be a place where everyone feels safe, happy, and respected. Bullying is never okay. Every child has the right to feel included and cared for. We work to prevent bullying by teaching children how to spot it and what to do if it happens. We also teach safe online habits and how to report hurtful messages. When we understand bullying, we can stop it together.

WHAT IS BULLYING?

Bullying is when someone’s repeated actions make another person feel hurt, scared, or left out. It can happen in person or online.



- Bullying can look like:**
- **Emotional:** Leaving someone out, threatening, damaging belongings.
 - **Physical:** Hitting, kicking, pushing.
 - **Verbal:** Name-calling, teasing, spreading rumours.
 - **Online:** Mean messages or posts on social media.
 - **Prejudice-based:** Targeting someone because of perceived differences (e.g. race, gender, disability and so on)

EQUALITY, INCLUSION & DIVERSITY

At our school everyone is welcome and everyone belongs. We celebrate what makes each of us unique, our differences and make sure everyone feels included! We challenge prejudice and promote fairness through:

- Learning about different cultures and beliefs
- Being a Rights Respecting school
- Standing up for equality together



WHAT WE DO IF BULLYING HAPPENS

CHILDREN			FAMILIES
Use a kind but strong voice	Walk away to a safe place	Find a trusted adult	If you have concerns, see or hear something let us know right away. We are here to help.
SCHOOL			
We listen to you and your family to help you feel safe	We talk to everyone involved and write down what happened	We fix things together and make things right	We help you move on, feel better and keep in touch to make sure things stay positive

Together, we make Low Port a place where everyone belongs!